

# Turning inspection into productivity.



**ZEISS BOSELLO** OMNIA



# ZEISS BOSELLO OMNIA

Made for production! The robust 2D X-ray system ZEISS BOSELLO OMNIA reliably and quickly inspects different castings with various sizes – for high throughput in your production line around the clock.



## CUSTOMIZABLE SET-UP

The system can be integrated into your robotic working cell. Marking and identification features as well as remote operator unit and special interfaces are available on request to offer a totally customized and flexible solution for your needs.



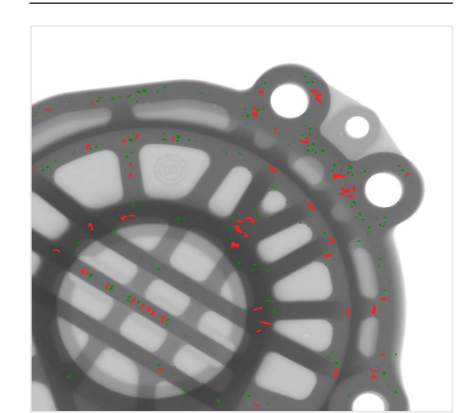
## AUTOMATED DEFECT RECOGNITION

The self-designed and developed ADR software FARIS enables fully automatic X-ray inspection of different kinds of castings independent of the operator. It can be customized to comply with specific user acceptability or various ASTM standards.

### 2D X-RAY IMAGE



### EVALUATION WITH ADR



## ROBUST AND RELIABLE SYSTEM

With its robust design, ZEISS BOSELLO OMNIA is made for the harsh production environment. The reliable system ensures an automated 100% inline inspection for multi-shift operation in your production. With our global ZEISS service we guarantee fast and reliable support to meet your up-time requirements.



## FULL FLEXIBILITY

Due to the clever pallet concept, various types of castings can be inspected. Hereby, the pallets can be removed and changed quickly without using any tools. If required, we design and supply the optimum fixture for the inspection of your parts.



## HIGH THROUGHPUT

Achieve highest throughput in your production! The rotating loading table enables parallel scanning and loading, whereby idle time is reduced to a minimum.

## ZEISS BOSELLO OMNIA – FEATURES\*

	ZEISS BOSELLO OMNIA 120.70	ZEISS BOSELLO OMNIA 160.100
<b>Inspectable area</b>	1170 x 670 x H 380 mm	1570 x 970 x H 480 mm
<b>Output voltage</b>	160 kV – 225 kV	160 kV – 225 kV
<b>Pixel size 8 inches FPD detector</b>	200 µm / 400 µm	200 µm / 400 µm
<b>Pixel size 10 inches FPD detector</b>	100 µm	100 µm
<b>Pixel size 16 inches FPD detector</b>	100 µm / 200 µm / 400 µm	100 µm / 200 µm / 400 µm
<b>Idle time between scans</b>	≤ 6 seconds	≤ 6 seconds
<b>Compatible software</b>	BHT IP Plus**, BHT ADR, BHT DDA evaluator	

\*Special version for engine blocks available

\*\*Optional: "Extreme" version

**Carl Zeiss**

Industrielle Messtechnik GmbH  
73446 Oberkochen/Germany

Phone: +1 763 744-2400  
Fax: +1 763 533-0219

Email: [info.metrology.us@zeiss.com](mailto:info.metrology.us@zeiss.com)  
[www.zeiss.com/metrology](http://www.zeiss.com/metrology)